

There are several notes I need to provide to aid you with the enclosed package. The original kits used 1/16" balsa. Since I wanted to print these directly on balsa sheet I developed the parts for 1/32" balsa sheet. My printer will handle up to 1/20" sheet, but I find 1/32" is a little easier to handle in the printer. Since the Jigtime jet models are intended to be flown as catapult launched gliders, the strength of 1/16" balsa is really necessary. As a result, all of the parts have been drawn to be laminated from two layers of 1/32" balsa. This offers several opportunities to actually enhance an already great design. It also makes it possible to improve the strength of the fuselage formers by having the grain of the two layers oriented 90 degrees from each other.

All of the flying surfaces have been laid out with a mirrored side. This means that the flying surfaces can now have color and markings applied to both sides, not just the top or one side. The bottom parts for wing and stab surfaces have been marked on the part sets. In addition to being able to have both sides of the flying surfaces printed, laminating parts can also make the fuselage assembly much easier and nicer in appearance. The original kits used tabs and slots in the 1/16" balsa parts. This resulted in the tabs and slots being seen on the finished model. If the fit was not great, the model appearance suffered. The reproduction parts have been drawn to place slots only in the inside lamination layer. This effectively forms pockets for the former tabs once the pieces have been laminated. Since the outside layer does not have a slot, the overall appearance of the finished model is much cleaner.

When building the model, I have found it is best to cut out and laminate all parts before cutting out any of the internal details such as holes or wing slots. The only exceptions to this are the slots in the fuselage sides, top, and bottom for former tabs. These should be cut before the parts are laminated. My preferred adhesive is traditional cellulose based model airplane cement. Something like Siment, Ambroid, Testors, or Duco. This adhesive is light weight and dries quickly, but does allow repositioning of parts.

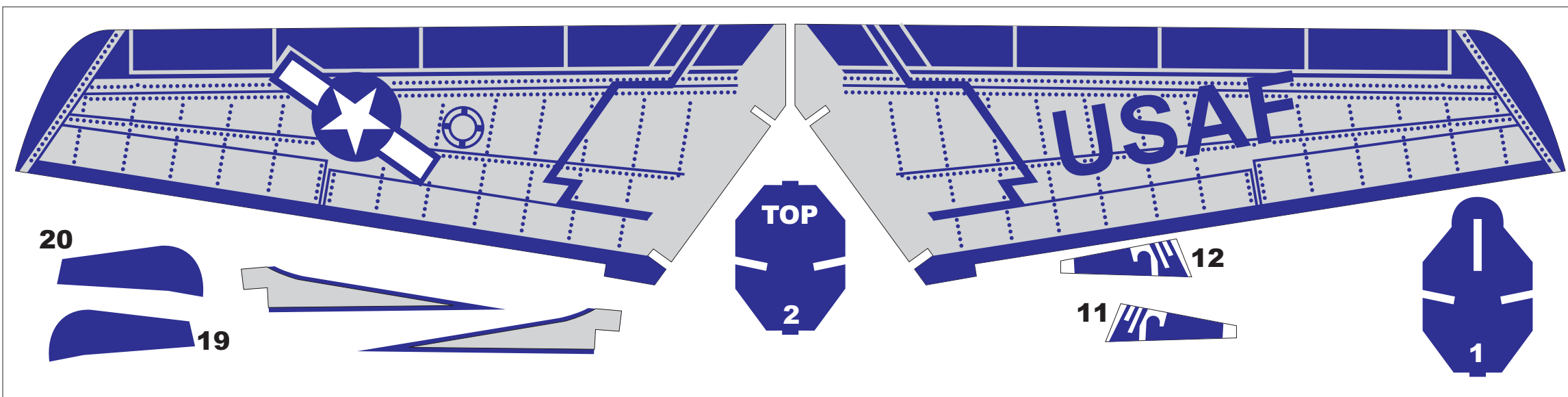
During the assembly, when you come to the step involving sliding the fuselage sides over the wing take special note of the fore and aft positioning. The wing slots will allow for a small amount of alignment adjustment. You want to be sure the two fuselage sides are perfectly aligned with each other after they are in position. If not you can move them slightly fore and aft until proper alignment is achieved.

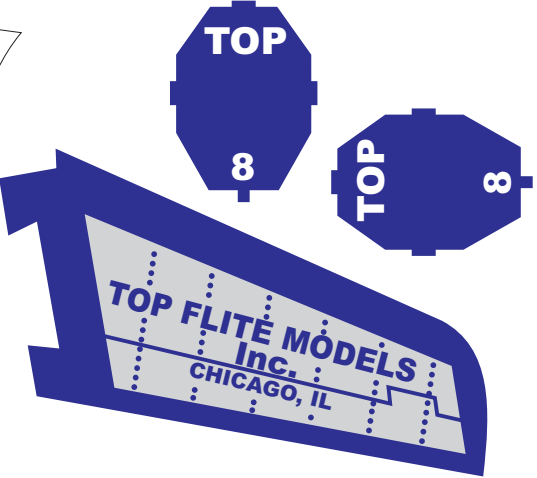
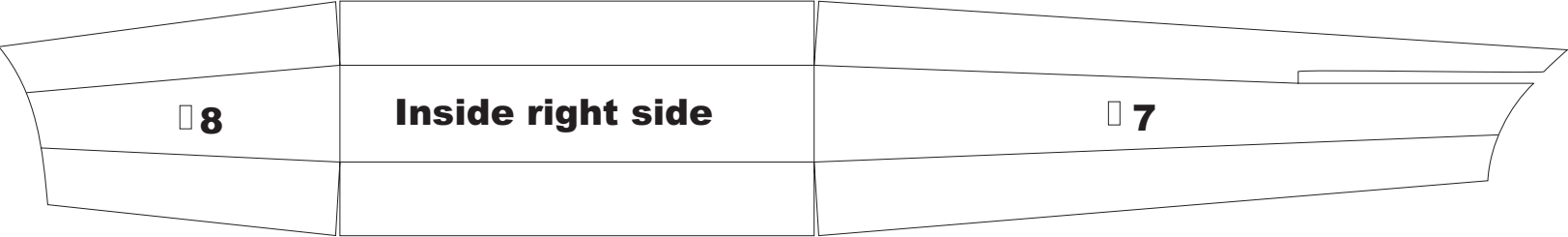
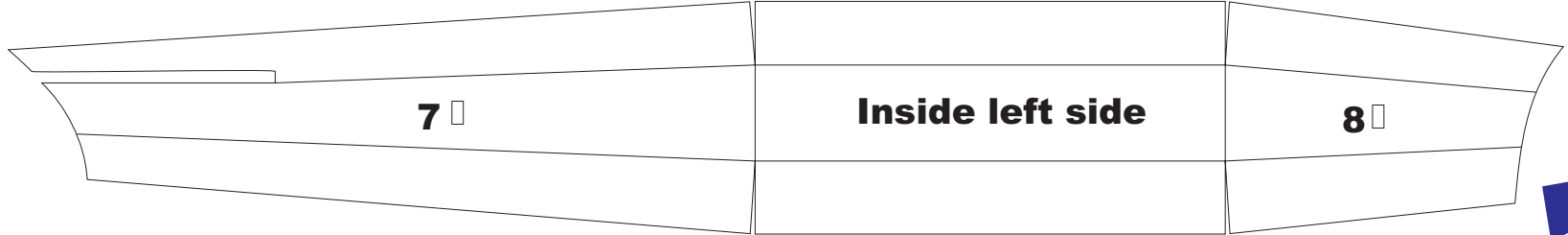
Most inkjet printer ink is not waterproof. Krylon spray Fixativf works very well as a lightweight sealer. An alternative is a very thin coat of clear dope. A solution of one part dope to 9 parts thinner will be enough to seal the printer ink. You can seal the printed side of the sheets before you cut out the parts, or you can apply the sealer after assembling the model. If the sealer is applied after assembly, be sure to take that step before installing your canopy.

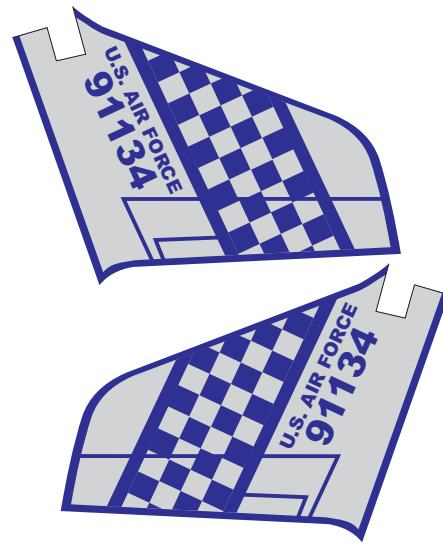
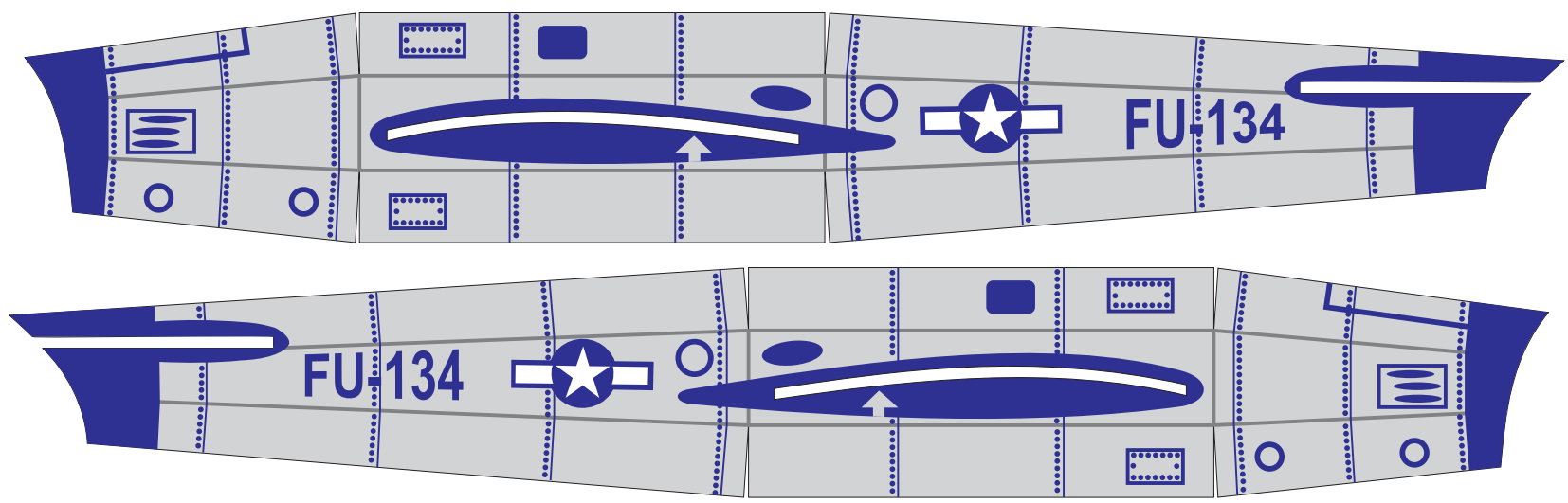
One additional note. The catapult hook should be reinforced. The original kit used two pieces made from 1/16" hard balsa. The two 1/32" balsa pieces will not have the strength needed. I find that a lamination of 1/64" plywood between the two balsa pieces provides plenty of additional strength with very little weight gain.

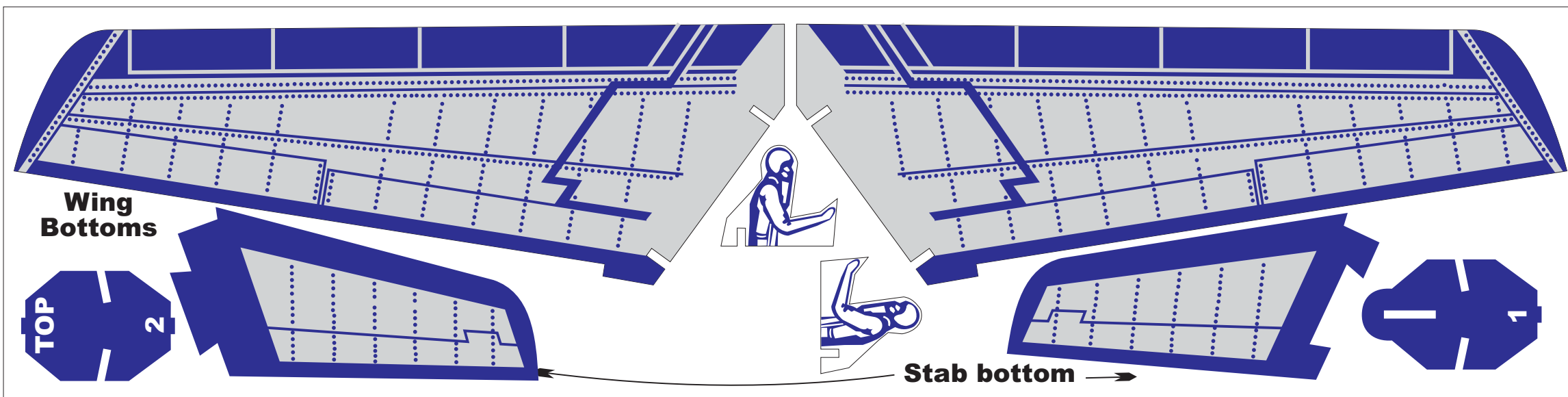
I do hope you build and enjoy a model from this plan package.

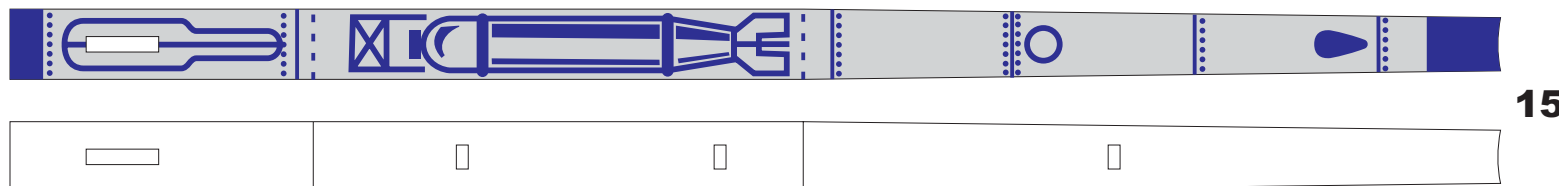
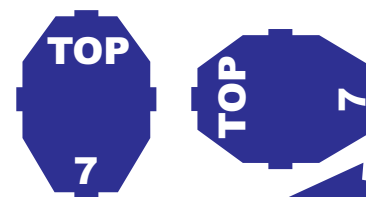
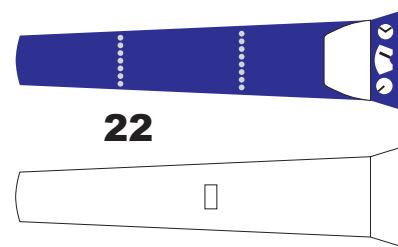
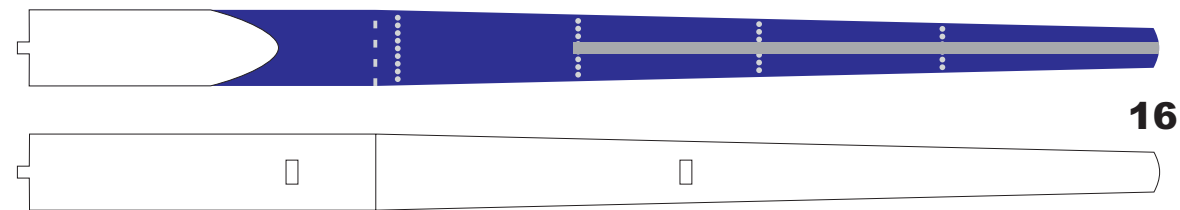
Paul Bradley

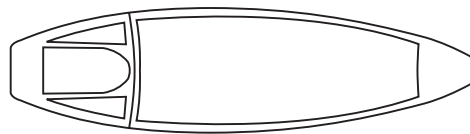












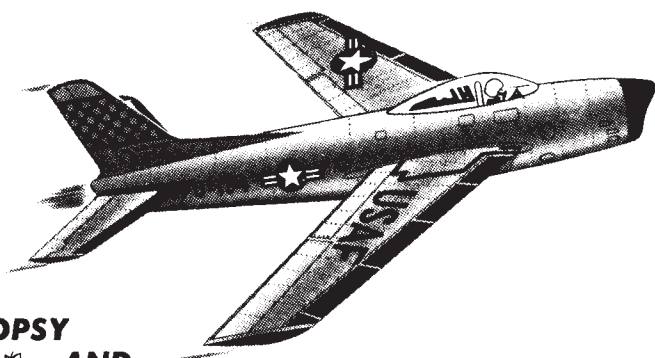
**Plan for vacuum form mold,
or carved foam part**

F-86 Sabre

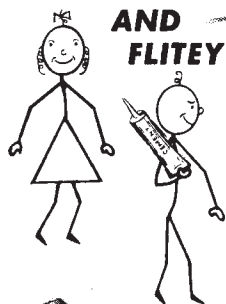
2635 S. WABASH AVE.



CHICAGO 16, ILLINOIS

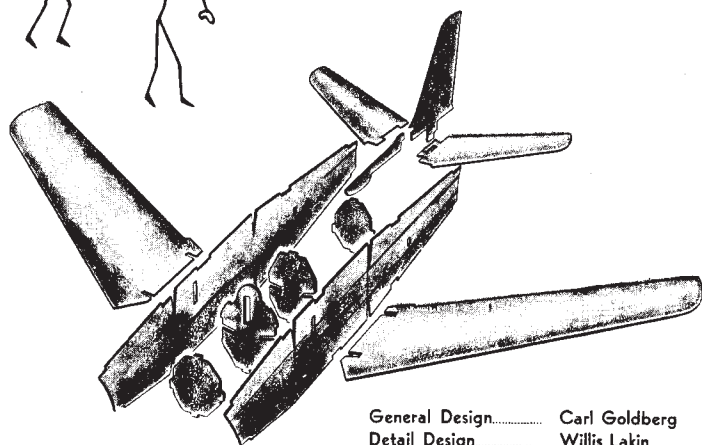


**TOPSY
AND
FLITEY**



BUILDING THE JIGTIME

F-86 SABRE JET



General Design..... Carl Goldberg
Detail Design..... Willis Lakin
Sketches..... Ben Hamilton

GUARANTEED TO FLY!

1 FLITEY, WE HAVE TO USE **REGULAR MODEL AIRPLANE CEMENT**. NOW LET'S FIT FORMERS 1 AND 2 **TIGHTLY** TO WING 3.

THEN WE SLIDE WING 4 **TIGHTLY** INTO PLACE, AND CEMENT. AND LET'S USE A **PAPER TOWEL OR PAPER NAPKIN** TO WIPE THE CEMENT OFF OUR FINGERS.

2

NOW WE SLIDE FUSELAGE SIDES 5 AND 6 OVER THE WINGS **UNTIL THEY FIT UP AGAINST FORMERS 1 AND 2**.

OK TOPSY, THEN LET'S **RUN CEMENT OVER THE CRACKS** WHERE THE WINGS GO INTO THE FUSELAGE, AND DON'T FORGET THE **BOTTOM!**

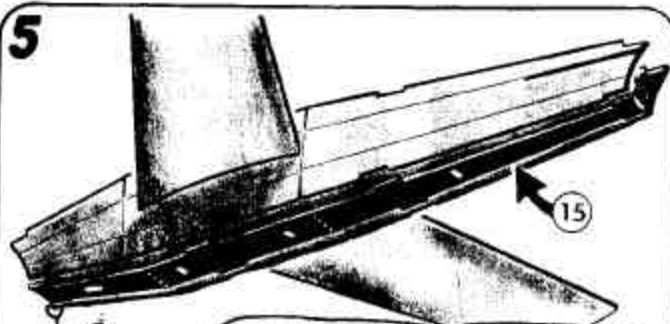
3 TOPSY AND FLITEY ARE DOING FINE SO FAR. THEY ARE GIVING THE CEMENT TIME TO DRY BEFORE GOING ON TO THE NEXT STEP.

NEXT WE **BEND FUSELAGE SIDES 5 AND 6** AT THE BENDING MARKS **A** AND **B** AND CEMENT FORMERS 7 AND 8 BETWEEN THEM.

RIGHT, AND LET'S **HOLD THEM TOGETHER** UNTIL THE CEMENT DRIES.



5



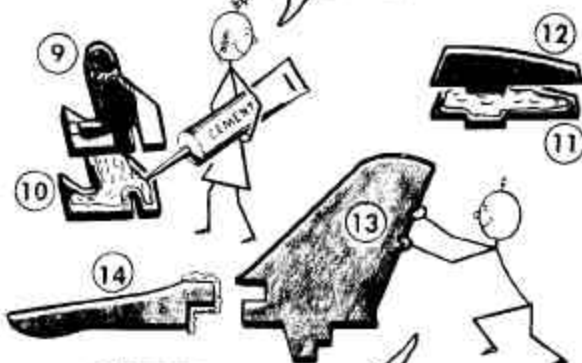
NOW WE **BEND BOTTOM 15** AT THE BENDING MARKS, AND CEMENT IT TO FORMERS 1, 2, 7 AND 8.

FLITEY! **DON'T CEMENT BOTTOM 15** TO FUSELAGE SIDES 5 AND 6 YET.



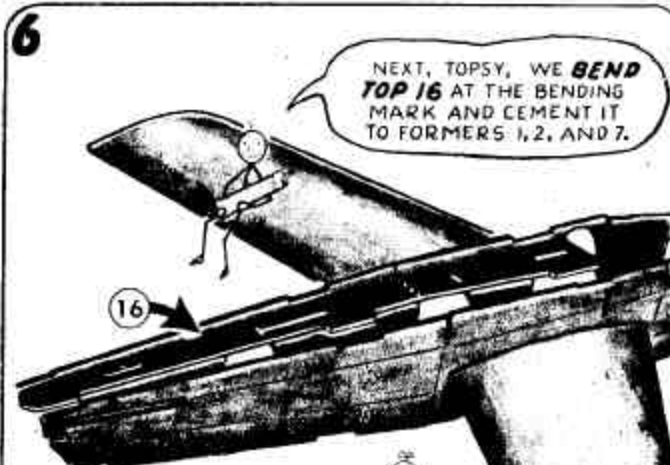
4

WELL FLITEY, HERE WE **CEMENT** THE PILOT HALVES 9 AND 10 TOGETHER. ALSO THE RADIO EQUIPMENT 11 AND 12.



AND RUDDER 13 AND DORSAL FIN 14 TOO! TOPSY, THAT **EXPLODED DRAWING** ON THE **FRONT** OF THE BOOK SURE CAN HELP US IF WE GET IN A JAM.

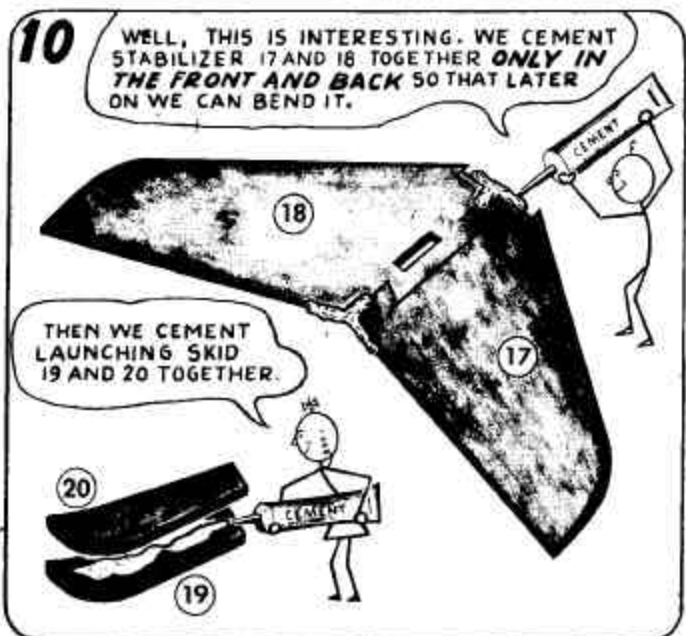
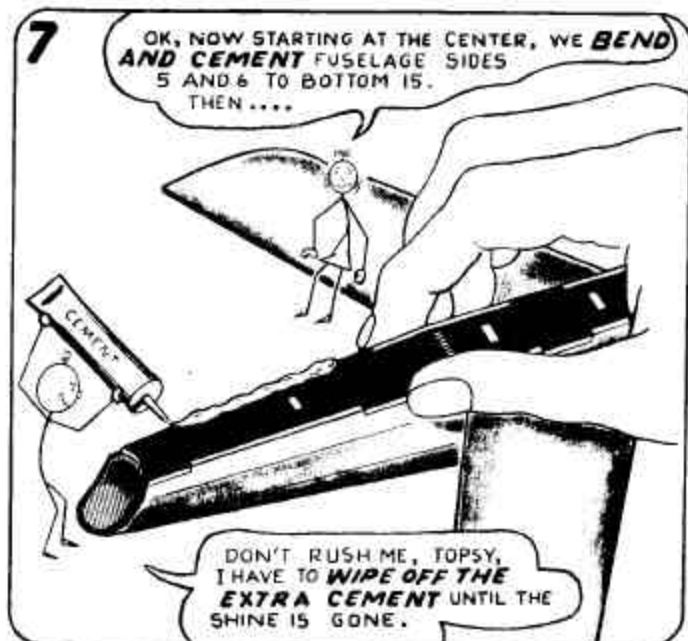
6

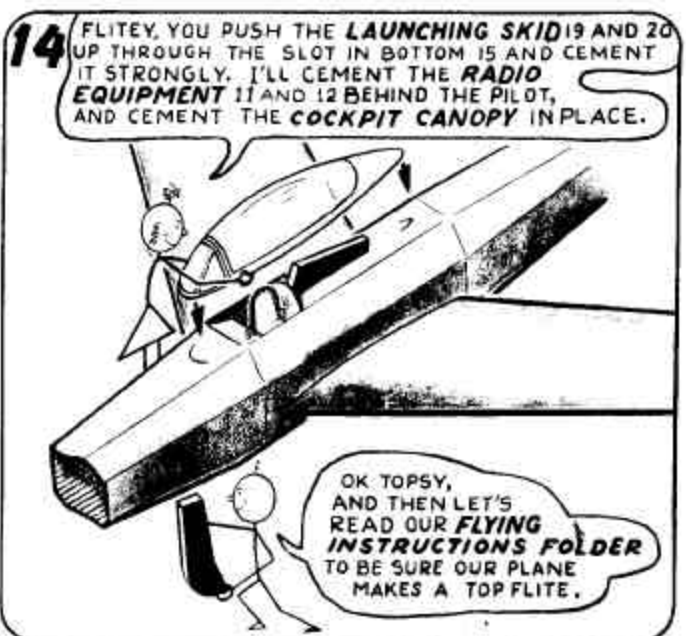
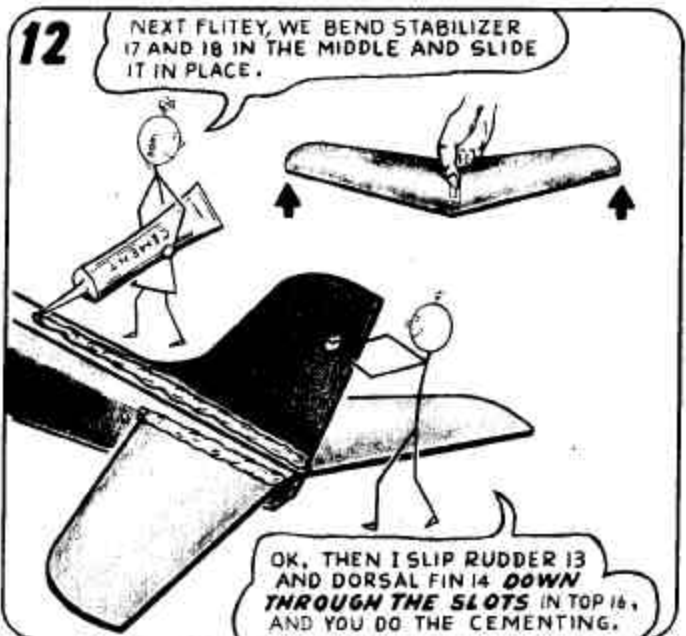
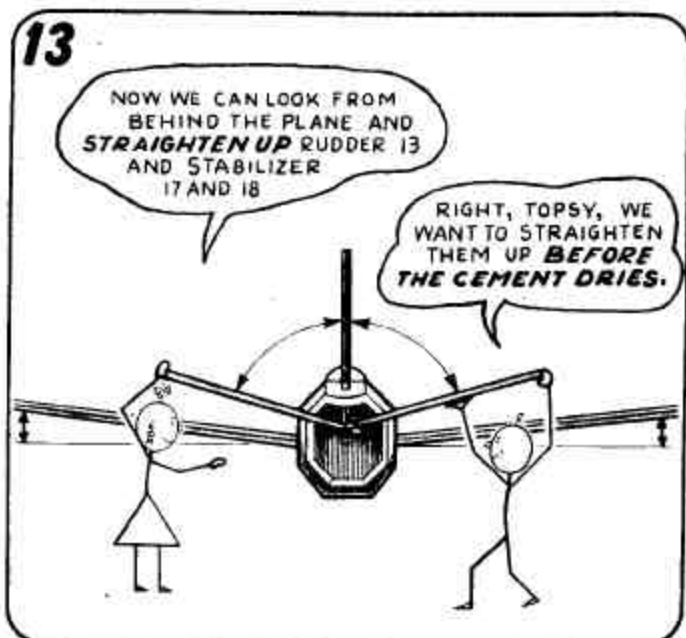
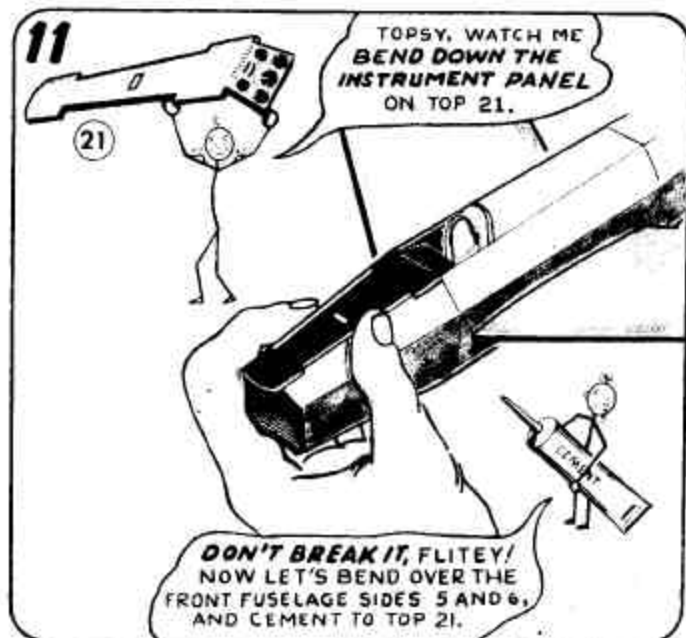


NEXT, TOPSY, WE **BEND TOP 16** AT THE BENDING MARK AND CEMENT IT TO FORMERS 1, 2, AND 7.

REMEMBER — **DON'T CEMENT TOP 16** TO FUSELAGE SIDES 5 AND 6 YET!







YOUR **TOP FLITE** JIGTIME SQUADRON IS GUARANTEED TO FLY!



F-86
SABRE JET, 25¢



RUSSIAN
MIG-15, 25¢



NAVY
CUTLASS, 25¢



NAVION, 59¢



PIPER
VAGABOND, 59¢



ARROWJET, 59¢



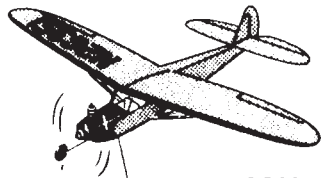
LUSCOMBE
SEDAN, 59¢



RASCAL 18, 59¢



STINSON
SENTINEL, 59¢



LIL RASCAL,
27" GAS MODEL, \$1.50

Guarantee Certificate

This Top Flite JIGTIME model is guaranteed to fly when the builder follows the instructions and diagrams accurately. Please comply closely with all directions and your model is sure to fly.

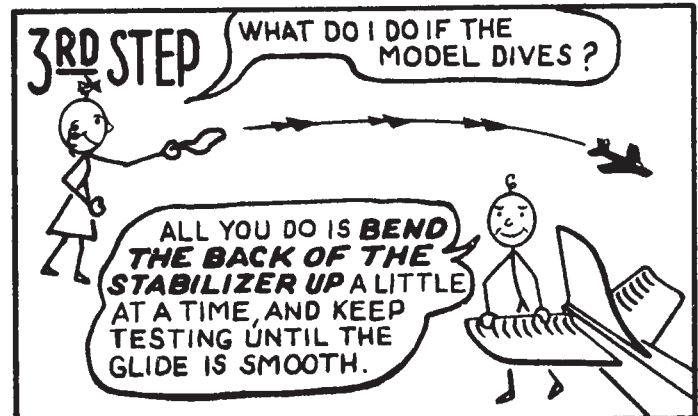
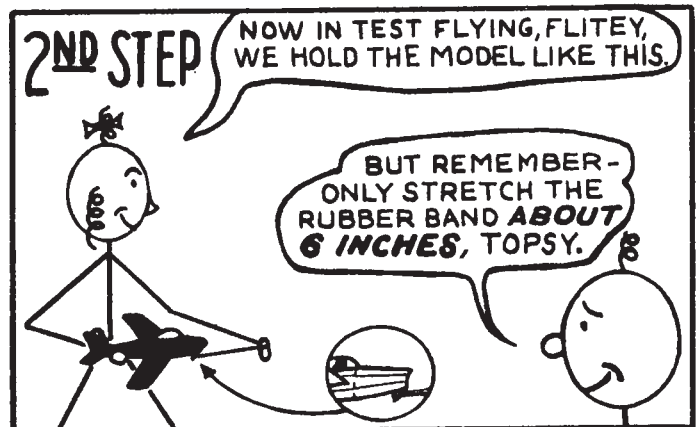
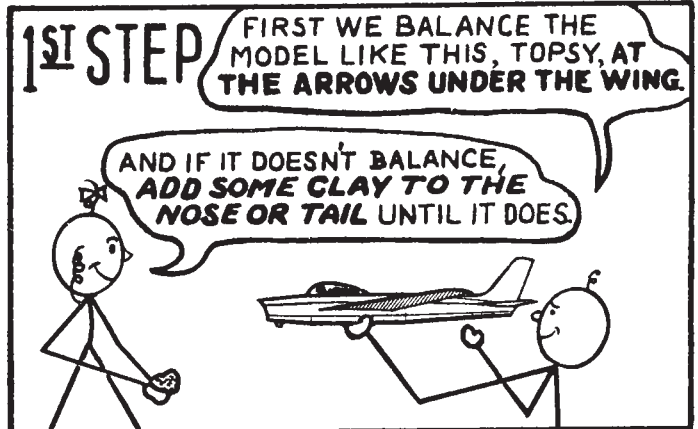
You'll find the instructions on "How To Fly Your Model" very helpful.

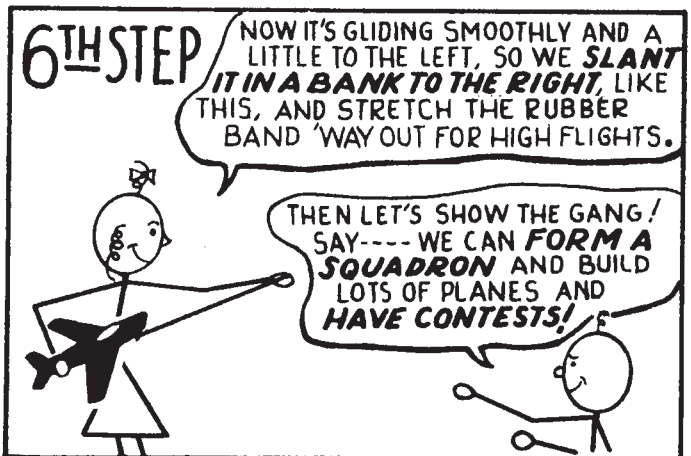
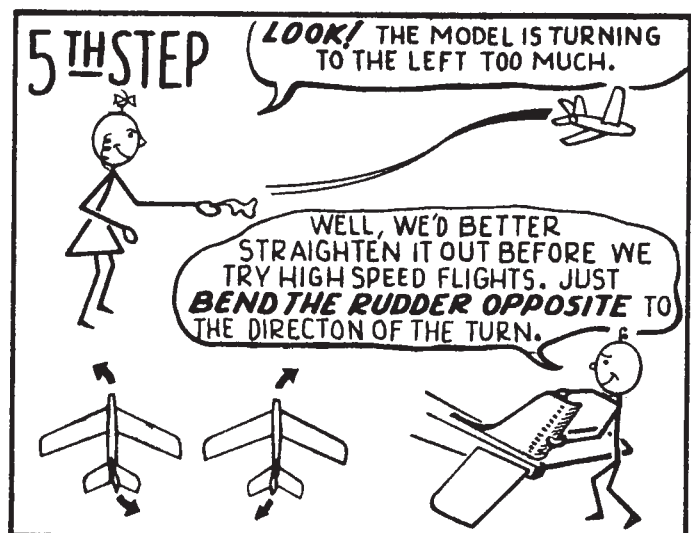
In case of difficulty, consult an experienced modeler or your dealer for possible adjustments. If you have made the model accurately, and it still cannot be made to fly satisfactorily, the dealer is authorized to refund your purchase price upon surrender of the finished model.

TOP FLITE MODELS, Inc.

Chicago, Ill.

HERE'S HOW WE GET SUCCESSFUL FLIGHTS ACTUALLY REACHING SPEEDS OVER 50 MILES PER HOUR





HERE'S HOW WE PAINT OUR MODEL

